



## Kaskikuusi Adult Education Centre

Are you unsure of which study group or study group level would suit you best? Or do you have some new fresh ideas? Come and visit us, or call us and we will give you more information about our study groups. Moreover, if you are interested in study groups in other institutes in the Upper Savo region, please contact us.

Welcome to an Adult Open College/Community College based in Lapinlahti. The Adult Education Centre offers hundreds of courses for adults and youngsters from following fields:

- Music (Musiikki)
- Handicraft (Kädentaidot)
- Physical Exercise (Liikunta)
- Dance (Tanssi)
- Health Care (Terveydenhoito)
- Languages (Kielet)
- Visual Arts (Kuvataide)
- Theatre and Literature (Teatteri ja kirjallisuus)
- Information Technology (Tietotekniikka)
- Gardening (Puutarha)
- Cooking (Kotitalous)
- Events and Exhibitions (Tapahtumat ja näyttelyt)
- Online courses (Verkkokurssit)
- Public Lectures (Yleisöluennot)

The Adult Education Centre's office in Lapinlahti is located at the Town Hall (kunnanvirasto, Asematie 4). The office is open on Mon, Tue, Wed and Thu at 9–15. The phone number of the centre is 040 4883 201.

Principal of the Adult Education Centre  
Marko Komulainen  
Tel. 040 4883 201  
Email: marko.komulainen@lapinlahti.fi  
Available on Mon, Tue, Wed and Thu at 9–15.

Office  
Riitta Torssonen-Kärkkäinen  
Tel. 040 4883 202  
Email: riitta.torssonen-karkkainen@lapinlahti.fi  
Available on Mon and Thu at 9–15, Tue at 9–12 and Wed at 12–15.

Handicraft teacher  
Anne Miettinen  
Tel. 040 4883 207  
Email: anne.miettinen@opedu.lapinlahti.fi

Music teacher  
Eeva Kivi-van Zantvoort  
Tel. 040 4883 204  
Email: eeva.kivi@opedu.lapinlahti.fi

Music teacher  
Jarmo Karvonen  
Tel. 040 4883 205  
Email: jarmo.karvonen@opedu.lapinlahti.fi

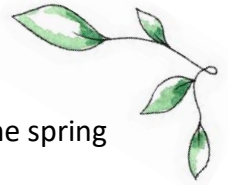
You can find us also on Facebook ([www.facebook.com/kaskikuusi](http://www.facebook.com/kaskikuusi)) and on Instagram ([www.instagram.com/kaskikuusenkansalaisopisto](http://www.instagram.com/kaskikuusenkansalaisopisto)).



## The Program of Kaskikuusi

The Centre's programme and other information also in English can be found on the Internet at [www.kaskikuusi.fi](http://www.kaskikuusi.fi) and [www.lapinlahti.fi](http://www.lapinlahti.fi). Information about possible changes in the Centre's programme, vacant places in study groups, lectures and study groups starting later is given in the Matti ja Liisa newspaper.





Some new ideas or something to ask? Please, tell us! We will publish information about the spring study groups in December

### Centre's Working Year

Teaching starts generally on week 38. The starting dates are given under the study group information in the program.

Autumn semester (11 weeks) 19th September–11th December, Autumn break 11th October–17th October (week 42)

Spring semester (12 weeks) 9th January–9th April, Winter break 6th March–12th March (week 10)

### Enrollment

You can sign up for the courses by Internet ([www.kaskikuusi.fi](http://www.kaskikuusi.fi)), by phone (tel 040 4883 201) or by visiting the office. Internet enrollment is in Finnish. For all study groups, an advance registration is required and binding. The enrollment for the courses, which you can find in the Centre's programme, starts on Monday, 22nd August at 10 a.m. You can always ask for available places during school year too. The enrolment for music lessons and solo singing is year-round. You will get a notice of your place in the course after signing up. The course will begin if there are enough participants (each course has a set minimum). If the course is full you can be placed on a waiting list, and the Office will call you if you are able to get into the course. If a course is cancelled, students will be informed by a text message. The students will be informed on any course changes by a text message.

We suggest students enroll as early as possible to make sure they have a place in the course.

### Study Group Fees and Discounts

The basic study group fee is 1,50€ or 2,00€/hour. Music instrument lessons and solo singing are priced differently. To pay the study group fee, each student will receive a bill by mail, or you can use another payment method like ePass, SmartumPay, Eazybreak or Edenred. There are different kinds of discounts also for immigrants!

If you have a right to a discount, you have to contact the Office immediately the course has begun. For further information, please contact us or look at the guide book pages 9–13.

